



Southover, Woodside Park, N12 7JE

Per Calendar Month £4,550 Per Calendar Month Council Tax Band G

REAL ESTATES
Est.1981

Estate Agents · Residential Sales · Investments · Lettings

***AVAILABLE 11TH AUGUST* FURNISHED * A spacious 5 BEDROOM, 4 BATHROOM SEMI-DETACHED family home arranged over 3 floors and situated in the heart of Woodside Park, close to WOODSIDE PARK NORTHERN LINE TUBE STATION and within walking distance to Woodridge Primary School. Local shops, cafes and parkland are all within easy reach.**

*** 3 RECEPTION ROOMS * GUEST CLOAKROOM * DOWNSTAIRS SHOWER ROOM * KITCHEN/BREAKFAST ROOM * 4 BEDROOMS & 2 BATHROOMS TO 1ST FLOOR * MASTER BEDROOM WITH EN SUITE BATHROOM TO 2ND FLOOR * GARDEN * OFF STREET PARKING 2/3 CARS * UNDER FLOOR HEATING * FURNISHED ***

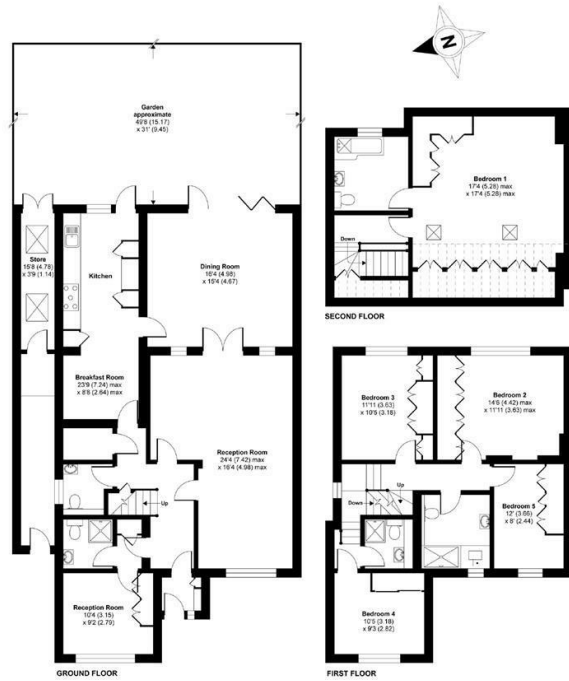




Southover, London, N12

Approximate Area = 2509 sq ft / 233.1 sq m
 Limited Use Area(s) = 127 sq ft / 11.8 sq m
 Total = 2636 sq ft / 244.9 sq m
 For identification only - Not to scale

Denotes restricted head height



Certified Property Measurer
 Floor plan produced in accordance with RICS Property Measurement Standards incorporating International Property Measurement Standards (IPMS2 Residential). © richrecom 2021. Produced for Real Estates. REF: 731489

Energy Efficiency Rating		Current	Potential
Very energy efficient - lower running costs	A		
Energy efficient - lower running costs	B		81
Decent energy efficiency - lower running costs	C	72	
Some energy efficiency - lower running costs	D		
Not very energy efficient - higher running costs	E		
Energy inefficient - higher running costs	F		
Very energy inefficient - higher running costs	G		

EU Directive



Real Estates Woodside Park Office:
 14/14a Sussex Ring
 Woodside Park N12 7HX

ll : 020 8445 6387
 e : info@realestates-wsp.co.uk
 w : www.realestates-wsp.co.uk